



ABBEY



Australian Stock Horse

HALL OF FAME

Performance Horses

Seven Performance Horses were submitted into the Hall of Fame at the 1991 Annual General Meeting. These horses were as follows:

- ABBEY
- ABDUL
- BOONERAH SANDMAN
- CROWN LAW
- ELLIOTTS CREEK CADET
- NABINABAH BREEZETTE
- RIVOLI RAY

By 1996, the following horses had also been accepted as Performance Horses into the Hall of Fame:

- BLUE MOON MYSTIC
- CECIL BRUCE
- QUIDONG BRIGADIER
- REALITY

Later inductees as Performance Horses into the Hall of Fame were as follows:

May 1997

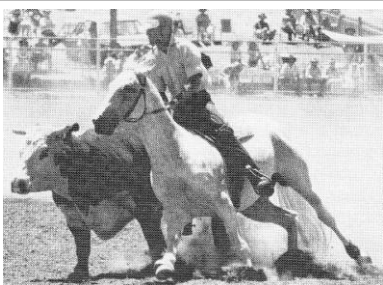
- CAPTAIN ADAM
- SCRUMLO VICTORY
- VALENTINE STUD SORRENTO
- VALENTINE STUD MASTER LUKE
- WARRENBRI ROMEO
- WAY WAY TARA
- WERTALOONA LIONEL
- YALLATUP RIVOLI REX



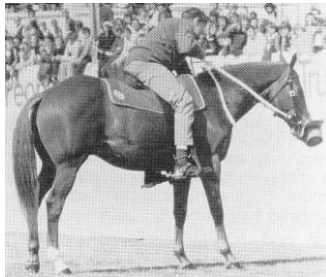
REALITY



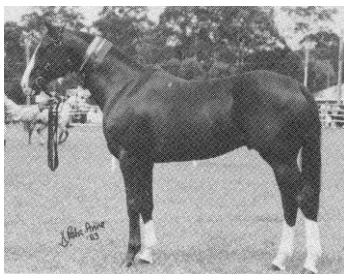
ABDUL



BLUE MOON MYSTIC



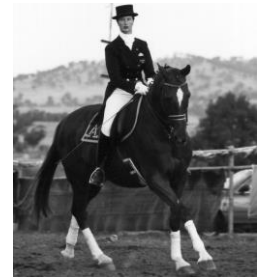
BOONERAH SANDMAN



CAPTAIN ADAM



CECIL BRUCE



CONQUISTADOR II



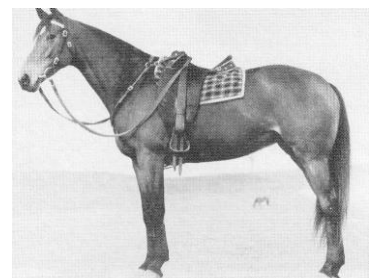
CROWN LAW



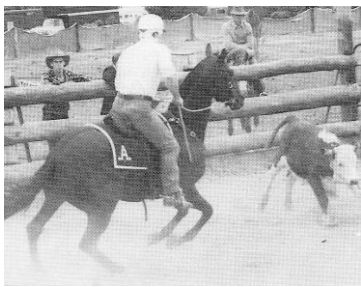
ELLIOTTS CREEK CADET



MASELL



NABINABAH BREEZETTE



QUIDONG BRIGADIER



RINGWOULD JAGUAR



RIVOLI RAY - Australian Champion Led Stock Horse
RIVOLI RAY



CHEVIN IVORY



SCRUMLO VICTORY



VALENTINE STUD MASTER LUKE

May 2000

CONQUISTADOR II

May 2001

MASELL

November 2008

RINGWOULD JAGUAR

November 2013

CHEVIN IVORY

August 2016

HAYDON ANGEL JEWEL

May 2023

MINDARI AENZAC



MINDARI AENZAC



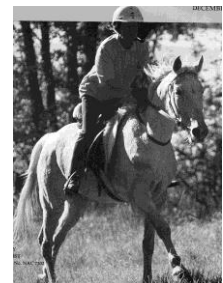
VALENTINE STUD SORRENTO



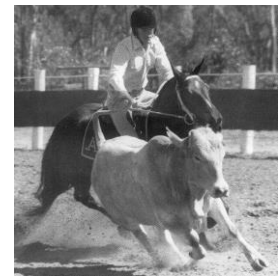
WAY WAY TARA



WARRENBRI ROMEO



WERTALOONA LIONEL



YALLATUP RIVOLI REX



HAYDON ANGEL JEWEL

In 2013, the following criteria was adopted by the Board for Performance Horses:

Hall of Fame - Performance Horses:

- The horse must be a Registered Australian Stock Horse and owned by a Financial Member of the Society at time the performances were gained.
- Within the chosen equine discipline or disciplines, the horse should be regarded a special achiever and a great horse, consistently winning at the highest level at many major events during a period of time exceeding 3 years.
- Successes at a standard level, random wins or numerous places at a high level and performances not exceeding 3 years are not considered under this criteria.
- Members, Branches, Management Councils and Directors may nominate horses for consideration to the Board. The acceptance or non-acceptance of a horse as a Hall of Fame - Performance Horse shall be a matter for the Board in its absolute discretion.