



Australian Stock Horse

FOUNDATION MARES

Registered Australian Stock Horse Mares registered in the first ten years
(Registration Numbers 1 – 65,000) with over 500 registered Australian Stock Horse
descendants within 5 generations.

AMBER PRINCESS - 9262

BROWN

Sire: unknown sire

Dam: unknown dam

Reference: Australian Stock Horse Journal May/June 2004 - Page 24
http://abri.une.edu.au/online/images/ASHS/9262_1.pdf



ARCADIA JINGLES - 2681

GREY

Sire: gold rock 02

Dam: nizami mare 02

Reference:
Article to be collated

PHOTOGRAPH
NOT
AVAILABLE

BARONA AMY - 13138

DUN

Sire: sea craft 02

Dam: palis 02

Reference: Australian Stock Horse Journal Mar/Apr 2011 - Page 10
http://abri.une.edu.au/online/images/ASHS/13138_1.pdf

PHOTOGRAPH
NOT
AVAILABLE

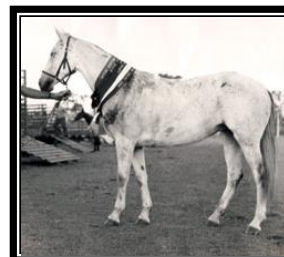
BARRETTS CREEK BETTY - 3548

GREY

Sire: unknown sire

Dam: unknown dam

Reference: Australian Stock Horse Journal July/Aug 2012 - Page 12
http://abri.une.edu.au/online/images/ASHS/3548_1.pdf



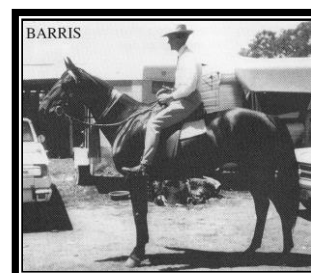
BARRIS - 1711

BROWN

Sire: bar eye 03

Dam: society 02

Reference: Australian Stock Horse Journal May/June 2011 - Page 10
http://abri.une.edu.au/online/images/ASHS/1711_1.pdf





Australian Stock Horse

FOUNDATION MARES

Registered Australian Stock Horse Mares registered in the first ten years
(Registration Numbers 1 – 65,000) with over 500 registered Australian Stock Horse
descendants within 5 generations.

BATES SECRET - 4800

GREY

Sire: wandobah 001

Dam: bobbie bruce mare 02

Reference:
Article to be collated

PHOTOGRAPH
NOT
AVAILABLE

BAWNDUGGIE BLUEBIRD II - 2293

GREY

Sire: sharlite 02

Dam: bluebird i 02

Reference:
Article to be collated

PHOTOGRAPH
NOT
AVAILABLE

BEAULEIGH REDWINGS - 17004

CHESTNUT

Sire: unknown sire

Dam: unknown dam

Reference:
Article to be collated

PHOTOGRAPH
NOT
AVAILABLE

BELLTREES CINDERS - 892

CHESTNUT

Sire: klimop 02

Dam: flame 06

Reference: Australian Stock Horse Journal July/Aug 2013 - Page 20
http://abri.une.edu.au/online/images/ASHS/892_1.pdf

PHOTOGRAPH
NOT
AVAILABLE

BLACK BESS - 370

BLACK

Sire: bronzone 02

Dam: unknown dam

Reference: Australian Stock Horse Journal Jan/Feb 2013 - Page 16
http://abri.une.edu.au/online/images/ASHS/370_1.pdf

PHOTOGRAPH
NOT
AVAILABLE



Australian Stock Horse

FOUNDATION MARES

Registered Australian Stock Horse Mares registered in the first ten years
(Registration Numbers 1 – 65,000) with over 500 registered Australian Stock Horse
descendants within 5 generations.

BORAH WANITA - 2723

CHESTNUT
Sire: brooker horse 02
Dam: gypsy 07
Reference:
Article to be collated

PHOTOGRAPH
NOT
AVAILABLE

BOXHURST BELLBIRD - 12526

BROWN
Sire: the bell boy 02
Dam: bess 07
Reference:
Article to be collated

PHOTOGRAPH
NOT
AVAILABLE

BOXHURST FIREFLY - 612

BROWN
Sire: parisian beau 02
Dam: val ray 02
Reference:
Article to be collated

PHOTOGRAPH
NOT
AVAILABLE

BRIGHTON BAY BAY LADY - 36432

BAY
Sire: sovereign 10
Dam: sandra 03
Reference:
Article to be collated

PHOTOGRAPH
NOT
AVAILABLE

BROWN SECRET - 7177

BROWN
Sire: JOHNSTONS DARK SECRET
Dam: sateen 02
Reference:
Article to be collated

PHOTOGRAPH
NOT
AVAILABLE



Australian Stock Horse

FOUNDATION MARES

Registered Australian Stock Horse Mares registered in the first ten years
(Registration Numbers 1 – 65,000) with over 500 registered Australian Stock Horse
descendants within 5 generations.

CARDONIS BREEZE - 4755

BAY
Sire: JUST FRED
Dam: rosewood mare 01

Reference:
Article to be collated

PHOTOGRAPH
NOT
AVAILABLE

CHAN SUE - 1901

BROWN
Sire: chan 02
Dam: glengarry station mare 01

Reference: Australian Stock Horse Journal Nov/Dec 2013 - Page 16
http://abri.une.edu.au/online/images/ASHS/1901_1.pdf

PHOTOGRAPH
NOT
AVAILABLE

CHERRY - 1560

BAY
Sire: mr cherry 001
Dam: gurley 01

Reference:
Article to be collated

PHOTOGRAPH
NOT
AVAILABLE

CINDERS MELODY - 18952

BROWN
Sire: CLARKES DAYLIGHT
Dam: cinders 02

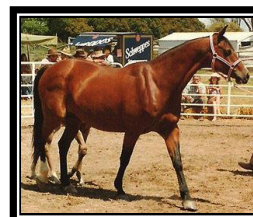
Reference: Australian Stock Horse Journal May/June 2012 - Page 10
http://abri.une.edu.au/online/images/ASHS/18952_1.pdf



COLONY KATHLEEN - 25679

BAY
Sire: chan 02
Dam: dell 03

Reference: Australian Stock Horse Journal Mar/Apr 2014 - Page 16
http://abri.une.edu.au/online/images/ASHS/25679_1.pdf





Australian Stock Horse

FOUNDATION MARES

Registered Australian Stock Horse Mares registered in the first ten years
(Registration Numbers 1 – 65,000) with over 500 registered Australian Stock Horse
descendants within 5 generations.

COMARA AMARETTE - 2650

BAY
Sire: red race 02
Dam: society 02

Reference: Australian Stock Horse Journal Jan/Feb 2011 - Page 10
http://abri.une.edu.au/online/images/ASHS/2650_1.pdf

PHOTOGRAPH
NOT
AVAILABLE

COMARA BLONDIE - 357

BLACK
Sire: tomahawk 02
Dam: benghazi mare 02

Reference:
Article to be collated

PHOTOGRAPH
NOT
AVAILABLE

COMARA PRINCESS - 358

BAY
Sire: bulga boy 02
Dam: unknown dam

Reference: Australian Stock Horse Journal Mar/Apr 2001 - Page 34
http://abri.une.edu.au/online/images/ASHS/358_1.pdf



CURRACABARK COUNTESS - 31238

CHESTNUT
Sire: CURRACABARK SOLITARE
Dam: princess 05

Reference:
Article to be collated

PHOTOGRAPH
NOT
AVAILABLE

DAWN - 244

CHESTNUT
Sire: batchelors alliance colt 02
Dam: lace 02

Reference:
Article to be collated

PHOTOGRAPH
NOT
AVAILABLE



Australian Stock Horse

FOUNDATION MARES

Registered Australian Stock Horse Mares registered in the first ten years
(Registration Numbers 1 – 65,000) with over 500 registered Australian Stock Horse
descendants within 5 generations.

DYRAABO MOONLIGHT - 5793

BAY
Sire: gold top 001
Dam: unknown dam

Reference:
Article to be collated

PHOTOGRAPH
NOT
AVAILABLE

ELMWOOD CHAMPAGNE - 4374

BROWN
Sire: ash carr 001
Dam: tuppy 01

Reference:
Article to be collated

PHOTOGRAPH
NOT
AVAILABLE

EULABAH GLEAM - 229

BROWN
Sire: young valais 02
Dam: pony mare 01

Reference: Australian Stock Horse Journal Mar/Apr 2004 - Page 23
http://abri.une.edu.au/online/images/ASHS/229_1.pdf

PHOTOGRAPH
NOT
AVAILABLE

FARNLEIGH TANDI - 31882

BAY
Sire: starveyor 02
Dam: damleigh 02

Reference:
Article to be collated

PHOTOGRAPH
NOT
AVAILABLE

FLADBURY STUD CRISENA - 10142

CHESTNUT
Sire: columnist 02
Dam: clue 02

Reference: Australian Stock Horse Journal Nov/Dec 2005 - Page 27
http://abri.une.edu.au/online/images/ASHS/10142_1.pdf

PHOTOGRAPH
NOT
AVAILABLE



Australian Stock Horse

FOUNDATION MARES

Registered Australian Stock Horse Mares registered in the first ten years
(Registration Numbers 1 – 65,000) with over 500 registered Australian Stock Horse
descendants within 5 generations.

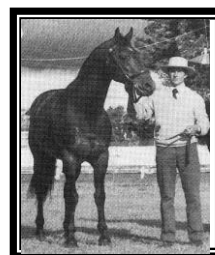
FOREST NANCY - 2316

BROWN

Sire: trigger 02

Dam: curio 02

Reference:
Article to be collated



FRECKLES - 453

GREY

Sire: bobbie bruce colt 02

Dam: bignells radiant mare 02

Reference:
Article to be collated

PHOTOGRAPH
NOT
AVAILABLE

GARTHOWEN MISS RIVOLI - 4263

BROWN

Sire: rivoli gift 02

Dam: thoroughbred mare 01

Reference: Australian Stock Horse Journal Mar/Apr 1999 - Page 26
http://abri.une.edu.au/online/images/ASHS/4263_1.pdf

PHOTOGRAPH
NOT
AVAILABLE

GLEN LEE CONNIE - 5122

CHESTNUT

Sire: jackeroo 001

Dam: wynot 01

Reference:
Article to be collated

PHOTOGRAPH
NOT
AVAILABLE

GLENALVON JOYITA - 831

BROWN

Sire: radar 03

Dam: glasonomy 02

Reference:
Article to be collated

PHOTOGRAPH
NOT
AVAILABLE



Australian Stock Horse

FOUNDATION MARES

Registered Australian Stock Horse Mares registered in the first ten years
(Registration Numbers 1 – 65,000) with over 500 registered Australian Stock Horse
descendants within 5 generations.

GLENGARRY ANN - 6407

BAY

Sire: chan 02

Dam: troy 02

Reference: Australian Stock Horse Journal July/Aug 2014 - Page 19
http://abri.une.edu.au/online/images/ASHS/6407_1.pdf



GLENNA - 3543

BROWN

Sire: bright flame 05

Dam: dark nell 03

Reference: Australian Stock Horse Journal July/Aug 2006 - Page 12
http://abri.une.edu.au/online/images/ASHS/3543_1.pdf



GLENROCK JEWEL - 5004

BROWN

Sire: GLENROCK GLENREGO

Dam: tessa 01

Reference:
Article to be collated

PHOTOGRAPH
NOT
AVAILABLE

GLIMPSE - 4414

CHESTNUT

Sire: serenity 02

Dam: memory 05

Reference:
Article to be collated

PHOTOGRAPH
NOT
AVAILABLE

GLORY - 486

BAY

Sire: chan 02

Dam: sundown 03

Reference:
Article to be collated

PHOTOGRAPH
NOT
AVAILABLE



Australian Stock Horse

FOUNDATION MARES

Registered Australian Stock Horse Mares registered in the first ten years
(Registration Numbers 1 – 65,000) with over 500 registered Australian Stock Horse
descendants within 5 generations.

HAYDON PIROUETTE - 6438

BLACK
Sire: bright valais 02
Dam: eulalie 02

Reference:
Article to be collated

PHOTOGRAPH
NOT
AVAILABLE

HUMEWOOD BLUE BOW - 4359

GREY
Sire: placebo 02
Dam: margie buck 02

Reference: Australian Stock Horse Journal Nov/Dec 2006 - Page 9
http://abri.une.edu.au/online/images/ASHS/4359_1.pdf

PHOTOGRAPH
NOT
AVAILABLE

HUNTLY SUNSTREAM - 1461

BAY
Sire: SUNDOWN
Dam: midstream mare 02

Reference:
Article to be collated

PHOTOGRAPH
NOT
AVAILABLE

JIN - 1193

BLACK
Sire: radios 02
Dam: silvius mare 02

Reference:
Article to be collated

PHOTOGRAPH
NOT
AVAILABLE

KENDALL PATSY - 7640

BAY
Sire: moccono 02
Dam: flash 08

Reference: Australian Stock Horse Journal July/Aug 2009 - Page 6
http://abri.une.edu.au/online/images/ASHS/7640_1.pdf





Australian Stock Horse

FOUNDATION MARES

Registered Australian Stock Horse Mares registered in the first ten years
(Registration Numbers 1 – 65,000) with over 500 registered Australian Stock Horse
descendants within 5 generations.

KIMRIDGE AMANDA - 33648

BLACK
Sire: AL BURACK
Dam: jedda 05

Reference: Australian Stock Horse Journal May/June 2015 - Page 26
http://abri.une.edu.au/online/images/ASHS/33648_1.pdf

PHOTOGRAPH
NOT
AVAILABLE

KIRKBYS STORM GLORY - 10638

CHESTNUT
Sire: storm warning 02
Dam: glen prairie glory 02

Reference: Australian Stock Horse Journal Sept/Oct 2011 - Page 10
http://abri.une.edu.au/online/images/ASHS/10638_1.pdf



KOYUNA FELICITY - 14688

CHESTNUT
Sire: nestor 02
Dam: philesia 02

Reference:
Article to be collated

PHOTOGRAPH
NOT
AVAILABLE

KRUETTE - 990

BAY
Sire: whistle 02
Dam: corkscrew 02

Reference: Australian Stock Horse Journal May/June 1999 - Page 16
http://abri.une.edu.au/online/images/ASHS/990_1.pdf



KYABRA LADY KAREENA - 14099

BROWN
Sire: NEVER IN DOUBT
Dam: tara lee 02

Reference:
Article to be collated

PHOTOGRAPH
NOT
AVAILABLE



Australian Stock Horse

FOUNDATION MARES

Registered Australian Stock Horse Mares registered in the first ten years
(Registration Numbers 1 – 65,000) with over 500 registered Australian Stock Horse
descendants within 5 generations.

LADY CHAN - 5593

BROWN

Sire: chan 02

Dam: meredith mare 01

Reference: Australian Stock Horse Journal Sept/Oct 2014 – Page 10
http://abri.une.edu.au/online/images/ASHS/5593_1.pdf

PHOTOGRAPH
NOT
AVAILABLE

LADY RADIANT - 1629

GREY

Sire: bignells radiant 02

Dam: bonnie 23

Reference: Australian Stock Horse Journal Mar/Apr 1999 - Page 24
http://abri.une.edu.au/online/images/ASHS/1629_1.pdf

PHOTOGRAPH
NOT
AVAILABLE

LARA - 2020

BROWN

Sire: commandant 02

Dam: volette 02

Reference:
Article to be collated

PHOTOGRAPH
NOT
AVAILABLE

LILY II - 360

BAY

Sire: tomahawk 02

Dam: radium bred mare 02

Reference:
Article to be collated

PHOTOGRAPH
NOT
AVAILABLE

LINDY LOU - 2076

BAY

Sire: flying gilt 02

Dam: unknown dam

Reference:
Article to be collated

PHOTOGRAPH
NOT
AVAILABLE



Australian Stock Horse

FOUNDATION MARES

Registered Australian Stock Horse Mares registered in the first ten years
(Registration Numbers 1 – 65,000) with over 500 registered Australian Stock Horse
descendants within 5 generations.

LITTLE DOVE - 5030

BROWN

Sire: tomahawk 02

Dam: kunderang station mare 01

Reference:
Article to be collated

PHOTOGRAPH
NOT
AVAILABLE

LITTLE MAY - 695

CHESTNUT

Sire: foster 02

Dam: lyncourt 02

Reference: Australian Stock Horse Journal Jan/Feb 2007 - Page 9
http://abri.une.edu.au/online/images/ASHS/695_1.pdf

PHOTOGRAPH
NOT
AVAILABLE

LITTLE SIS - 13106

BROWN

Sire: tatyoon 02

Dam: regime 01

Reference:
Article to be collated

PHOTOGRAPH
NOT
AVAILABLE

MACMILLANS DONNA - 1654

CHESTNUT

Sire: gentle prince colt 02

Dam: cooltrim 02

Reference:
Article to be collated

PHOTOGRAPH
NOT
AVAILABLE

MARGE - 362

CHESTNUT

Sire: benghazi 02

Dam: unknown dam

Reference:
Article to be collated

PHOTOGRAPH
NOT
AVAILABLE



Australian Stock Horse

FOUNDATION MARES

Registered Australian Stock Horse Mares registered in the first ten years
(Registration Numbers 1 – 65,000) with over 500 registered Australian Stock Horse
descendants within 5 generations.

MCGHEES LIBERTY BELLE - 26792

BROWN
Sire: ABBEY
Dam: liberty 02
Reference:
Article to be collated

PHOTOGRAPH
NOT
AVAILABLE

MERRY LEA - 5566

BROWN
Sire: merry scout 02
Dam: unknown dam
Reference:
Article to be collated

PHOTOGRAPH
NOT
AVAILABLE

MISS LYNLAND – 16517

CHESTNUT
Sire: SAGE KING
Dam: the rearing mare 02

Reference: Australian Stock Horse Journal Jan/Feb 2015 – Page 14
http://abri.une.edu.au/online/images/ASHS/16517_1.pdf



MISS WEDGEWOOD - 9514

CHESTNUT
Sire: sovereign 11
Dam: bill wedgewood mare 03
Reference:
Article to be collated

PHOTOGRAPH
NOT
AVAILABLE

MY CHANCE - 189

BROWN
Sire: chan 02
Dam: nabinabah bred mare 02

Reference: Australian Stock Horse Journal Nov/Dec 2009 - Page 16
http://abri.une.edu.au/online/images/ASHS/189_1.pdf





Australian Stock Horse

FOUNDATION MARES

Registered Australian Stock Horse Mares registered in the first ten years
(Registration Numbers 1 – 65,000) with over 500 registered Australian Stock Horse
descendants within 5 generations.

MYRA JANE - 2119

CHESTNUT
Sire: steel dust 02
Dam: janie 02

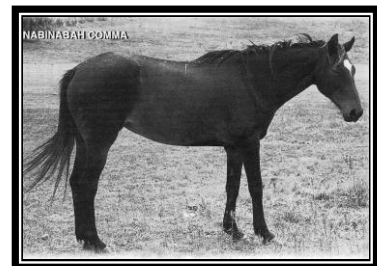
Reference: Australian Stock Horse Journal Sept/Oct 2009 - Page 8
http://abri.une.edu.au/online/images/ASHS/2119_1.pdf

PHOTOGRAPH
NOT
AVAILABLE

NABINABAH COMMA - 410

BROWN
Sire: MUSTER
Dam: calm 02

Reference: Australian Stock Horse Journal Jan/Feb 2001 - Page 8
http://abri.une.edu.au/online/images/ASHS/410_1.pdf



NABINABAH GENTLE - 415

CHESTNUT
Sire: cool bruce 02
Dam: serene 02

Reference:
Article to be collated

PHOTOGRAPH
NOT
AVAILABLE

NABINABAH SUNSET - 417

CHESTNUT
Sire: BAMBOROUGH GEMBACOLLIE
Dam: serene 02

Reference:
Article to be collated

PHOTOGRAPH
NOT
AVAILABLE

NABINABAH WREN - 407

BLACK
Sire: the lizard 03
Dam: throsby 02

Reference:
Article to be collated

PHOTOGRAPH
NOT
AVAILABLE



Australian Stock Horse

FOUNDATION MARES

Registered Australian Stock Horse Mares registered in the first ten years
(Registration Numbers 1 – 65,000) with over 500 registered Australian Stock Horse
descendants within 5 generations.

OMEEO MISTY - 7829

GREY

Sire: wanderer 02

Dam: bluey 10

Reference:
Article to be collated

PHOTOGRAPH
NOT
AVAILABLE

PACK MARE - 367

BAY

Sire: tomahawk 02

Dam: radium bred mare 02

Reference: Australian Stock Horse Journal Nov/Dec 2010 - Page 14
http://abri.une.edu.au/online/images/ASHS/367_1.pdf



PALMERS SISSY - 21586

BAY

Sire: fort keil 02

Dam: birdie 02

Reference: Australian Stock Horse Journal May/June 2007 - Page 9
http://abri.une.edu.au/online/images/ASHS/21586_1.pdf

PHOTOGRAPH
NOT
AVAILABLE

PIOBMOR SUSIE - 4344

DUN

Sire: bruce wood 02

Dam: dempsey mare 02

Reference:
Article to be collated

PHOTOGRAPH
NOT
AVAILABLE

RADIETTE - 86

BAY

Sire: bignells radiant 02

Dam: echos sister 02

Reference: Australian Stock Horse Journal Mar/Apr 2015 – Page 16
http://abri.une.edu.au/online/images/ASHS/86_1.pdf





Australian Stock Horse

FOUNDATION MARES

Registered Australian Stock Horse Mares registered in the first ten years
(Registration Numbers 1 – 65,000) with over 500 registered Australian Stock Horse
descendants within 5 generations.

RAMBLERS MARNIE - 60423

BAY

Sire: ferrys Rambler 02

Dam: freckles 04

Reference:
Article to be collated

PHOTOGRAPH
NOT
AVAILABLE

RED ROCK DOLL DANCE III - 17749

GREY

Sire: buddy 001

Dam: doll dance ii 02

Reference:
Article to be collated

PHOTOGRAPH
NOT
AVAILABLE

ROSEBROOK CEDAR - 1722

BAY

Sire: chan 02

Dam: melody 08

Reference: Australian Stock Horse Journal July/Aug 1999 - Page 14
http://abri.une.edu.au/online/images/ASHS/1722_1.pdf

PHOTOGRAPH
NOT
AVAILABLE

ROSEBROOK CINNAMON - 1725

BAY

Sire: commanchee 02

Dam: dot 28

Reference:
Article to be collated

PHOTOGRAPH
NOT
AVAILABLE

ROSEBROOK MARQUINETTE - 2736

CHESTNUT

Sire: quarter spade 02

Dam: lisa 02

Reference:
Article to be collated

PHOTOGRAPH
NOT
AVAILABLE



Australian Stock Horse

FOUNDATION MARES

Registered Australian Stock Horse Mares registered in the first ten years
(Registration Numbers 1 – 65,000) with over 500 registered Australian Stock Horse
descendants within 5 generations.

RUMBELS ALMA - 15389

BROWN

Sire: bignells radiant 02

Dam: bonnot 02

Reference: Australian Stock Horse Journal Mar/Apr 2013 - Page 16
http://abri.une.edu.au/online/images/ASHS/15389_1.pdf

PHOTOGRAPH
NOT
AVAILABLE

RYANS FOUR EX - 60999

BLACK

Sire: ABBEY

Dam: mystery 05

Reference: Australian Stock Horse Journal Jan/Feb 2010 - Page 6
http://abri.une.edu.au/online/images/ASHS/60999_1.pdf

PHOTOGRAPH
NOT
AVAILABLE

SA MILLERS SISTER - 2117

CHESTNUT

Sire: aureo colt 02

Dam: bruce mare 02

Reference:
Article to be collated

PHOTOGRAPH
NOT
AVAILABLE

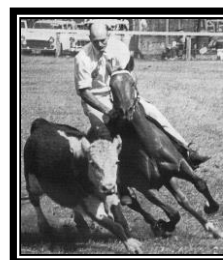
SCRUMLO BRANGA PRUDENCE - 51

BAY

Sire: tinagroo skibo radium 02

Dam: gay dawn 02

Reference: Australian Stock Horse Journal May/June 1999 - Page 14
http://abri.une.edu.au/online/images/ASHS/51_1.pdf



SCRUMLO MYSTERY - 57

CHESTNUT

Sire: tinagroo skibo radium 02

Dam: judy 04

Reference: Australian Stock Horse Journal July/Aug 1999 - Page 18
http://abri.une.edu.au/online/images/ASHS/57_1.pdf

PHOTOGRAPH
NOT
AVAILABLE



Australian Stock Horse

FOUNDATION MARES

Registered Australian Stock Horse Mares registered in the first ten years
(Registration Numbers 1 – 65,000) with over 500 registered Australian Stock Horse
descendants within 5 generations.

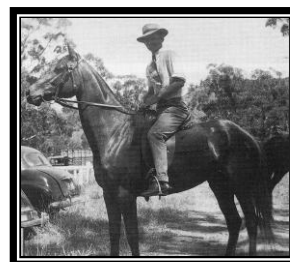
SCRUMLO NITA - 65

BAY

Sire: tranquil 02

Dam: swanie 02

Reference: Australian Stock Horse Journal Mar/Apr 1999 - Page 22
http://abri.une.edu.au/online/images/ASHS/65_1.pdf



SCRUMLO RITA - 58

PALOMINO

Sire: tranquil 02

Dam: helen 02

Reference: Australian Stock Horse Journal Nov/Dec 2014 – Page 16
http://abri.une.edu.au/online/images/ASHS/58_1.pdf

PHOTOGRAPH
NOT
AVAILABLE

SCRUMLO VICTORIA - 1448

BAY

Sire: bobbie bruce 02

Dam: flame 02

Reference: Australian Stock Horse Journal May/June 1999 - Page 18
http://abri.une.edu.au/online/images/ASHS/1448_1.pdf



SEVENTY SEVEN SUSIE - 43959

BAY

Sire: snow star colt 02

Dam: bobbie bruce mare 02

Reference:
Article to be collated

PHOTOGRAPH
NOT
AVAILABLE

SISTER MONTY - 3542

BLACK

Sire: starlight 06

Dam: black opal 02

Reference: Australian Stock Horse Journal Nov/Dec 1999 - Page 12
http://abri.une.edu.au/online/images/ASHS/3542_1.pdf

PHOTOGRAPH
NOT
AVAILABLE



Australian Stock Horse

FOUNDATION MARES

Registered Australian Stock Horse Mares registered in the first ten years
(Registration Numbers 1 – 65,000) with over 500 registered Australian Stock Horse
descendants within 5 generations.

SNOW WHITE - 368

PALOMINO

Sire: benghazi 02

Dam: comara queenie 01

Reference: Australian Stock Horse Journal Sept/Oct 2010 - Page 8
http://abri.une.edu.au/online/images/ASHS/368_1.pdf

PHOTOGRAPH
NOT
AVAILABLE

STANTON STUD HENRY - 13

BAY

Sire: cadilly 02

Dam: eclipse mare 02

Reference: Australian Stock Horse Journal July/Aug 2002 - Page 32
http://abri.une.edu.au/online/images/ASHS/13_1.pdf

PHOTOGRAPH
NOT
AVAILABLE

STANTON STUD JAN - 1650

BROWN

Sire: chan 02

Dam: neita 02

Reference: Australian Stock Horse Journal July/Aug 2007 - Page 6
http://abri.une.edu.au/online/images/ASHS/1650_1.pdf

PHOTOGRAPH
NOT
AVAILABLE

STANTON STUD KATEY BAR - 4495

BROWN

Sire: bareye 02

Dam: unknown dam

Reference: Australian Stock Horse Journal Sept/Oct 2017 - Page 10
http://abri.une.edu.au/online/images/ASHS/4495_1.pdf

PHOTOGRAPH
NOT
AVAILABLE

STANTON STUD MERRIMBA - 1653

CHESTNUT

Sire: midlake 02

Dam: lanjon 02

Reference:
Article to be collated

PHOTOGRAPH
NOT
AVAILABLE



Australian Stock Horse

FOUNDATION MARES

Registered Australian Stock Horse Mares registered in the first ten years
(Registration Numbers 1 – 65,000) with over 500 registered Australian Stock Horse
descendants within 5 generations.

STANTON STUD SAUCER - 5

BROWN

Sire: bobbie bruce 02

Dam: unknown dam

Reference: Australian Stock Horse Journal Sept/Oct 2001 - Page 18
http://abri.une.edu.au/online/images/ASHS/5_1.pdf



STANTON STUD TARA - 7

BROWN

Sire: radiums call 02

Dam: radium mare 02

Reference: Australian Stock Horse Journal Mar/Apr 2017 - Page 16
http://abri.une.edu.au/online/images/ASHS/7_1.pdf



TAMARANG DOCS DELLENA - 50160

CHESTNUT

Sire: docs poco bar 02

Dam: tamarang dellena 02

Reference:
Article to be collated

PHOTOGRAPH
NOT
AVAILABLE

TANIA - 365

BAY

Sire: germons rayon 02

Dam: jack coombes mare 01

Reference: Australian Stock Horse Journal Mar/Apr 2007 - Page 9
http://abri.une.edu.au/online/images/ASHS/365_1.pdf

PHOTOGRAPH
NOT
AVAILABLE

TARA - 3563

GREY

Sire: sensation 02

Dam: unknown dam

Reference: Australian Stock Horse Journal Nov/Dec 2007 - Page 6
http://abri.une.edu.au/online/images/ASHS/3563_1.pdf





Australian Stock Horse

FOUNDATION MARES

Registered Australian Stock Horse Mares registered in the first ten years
(Registration Numbers 1 – 65,000) with over 500 registered Australian Stock Horse
descendants within 5 generations.

TARWARRI LINDY - 1130

BROWN/BLACK
Sire: mountain eagle colt 02
Dam: cindy 17

Reference:
Article to be collated

PHOTOGRAPH
NOT
AVAILABLE

TERLINGS SPARKLE - 124

GREY
Sire: royal commission 02
Dam: bambi 04

Reference:
Article to be collated

PHOTOGRAPH
NOT
AVAILABLE

TILLY - 5458

GREY
Sire: leo grey 02
Dam: dauntless lass 02

Reference:
Article to be collated

PHOTOGRAPH
NOT
AVAILABLE

TIMOR SHIRALEE - 2968

BROWN
Sire: WALLAROO
Dam: star 08

Reference:
Article to be collated

PHOTOGRAPH
NOT
AVAILABLE

TINAGROO MERSA - 1066

BAY
Sire: panzer 02
Dam: ranmena 02

Reference:
Article to be collated

PHOTOGRAPH
NOT
AVAILABLE



Australian Stock Horse

FOUNDATION MARES

Registered Australian Stock Horse Mares registered in the first ten years
(Registration Numbers 1 – 65,000) with over 500 registered Australian Stock Horse
descendants within 5 generations.

VALETTA - 600

BAY
Sire: fort keil 02
Dam: fay 02
Reference:
Article to be collated

PHOTOGRAPH
NOT
AVAILABLE

VALETTE - 7329

BAY/BROWN
Sire: radiums last 02
Dam: val 04
Reference:
Article to be collated

PHOTOGRAPH
NOT
AVAILABLE

VARA - 1923

CHESTNUT
Sire: unknown sire
Dam: comic court mare 02
Reference:
Article to be collated

PHOTOGRAPH
NOT
AVAILABLE

WAIKON PARK TALIA - 12219

PALOMINO
Sire: unknown sire
Dam: scrumlo station mare 01
Reference:
Article to be collated

PHOTOGRAPH
NOT
AVAILABLE

YALLATUP SELENA - 23412

CHESTNUT
Sire: pescador 02
Dam: fidget 01
Reference:
Article to be collated

PHOTOGRAPH
NOT
AVAILABLE



Australian Stock Horse

FOUNDATION MARES

Registered Australian Stock Horse Mares registered in the first ten years
(Registration Numbers 1 – 65,000) with over 500 registered Australian Stock Horse
descendants within 5 generations.

YARRAMINE GIFT - 3275

GREY

Sire: silver thread 04

Dam: ekw station mare 01

Reference:
Article to be collated

PHOTOGRAPH
NOT
AVAILABLE

YARRANOO BANGLES - 3540

BROWN

Sire: young valais 02

Dam: wongle i 02

Reference: Australian Stock Horse Journal Sept/Oct 1999 – Page 18
http://abri.une.edu.au/online/images/ASHS/3540_1.pdf

PHOTOGRAPH
NOT
AVAILABLE

YARRAWA SUNSET - 21102

CHESTNUT

Sire: SUNDOWN

Dam: unknown dam

Reference:
Article to be collated

PHOTOGRAPH
NOT
AVAILABLE